

YEAR

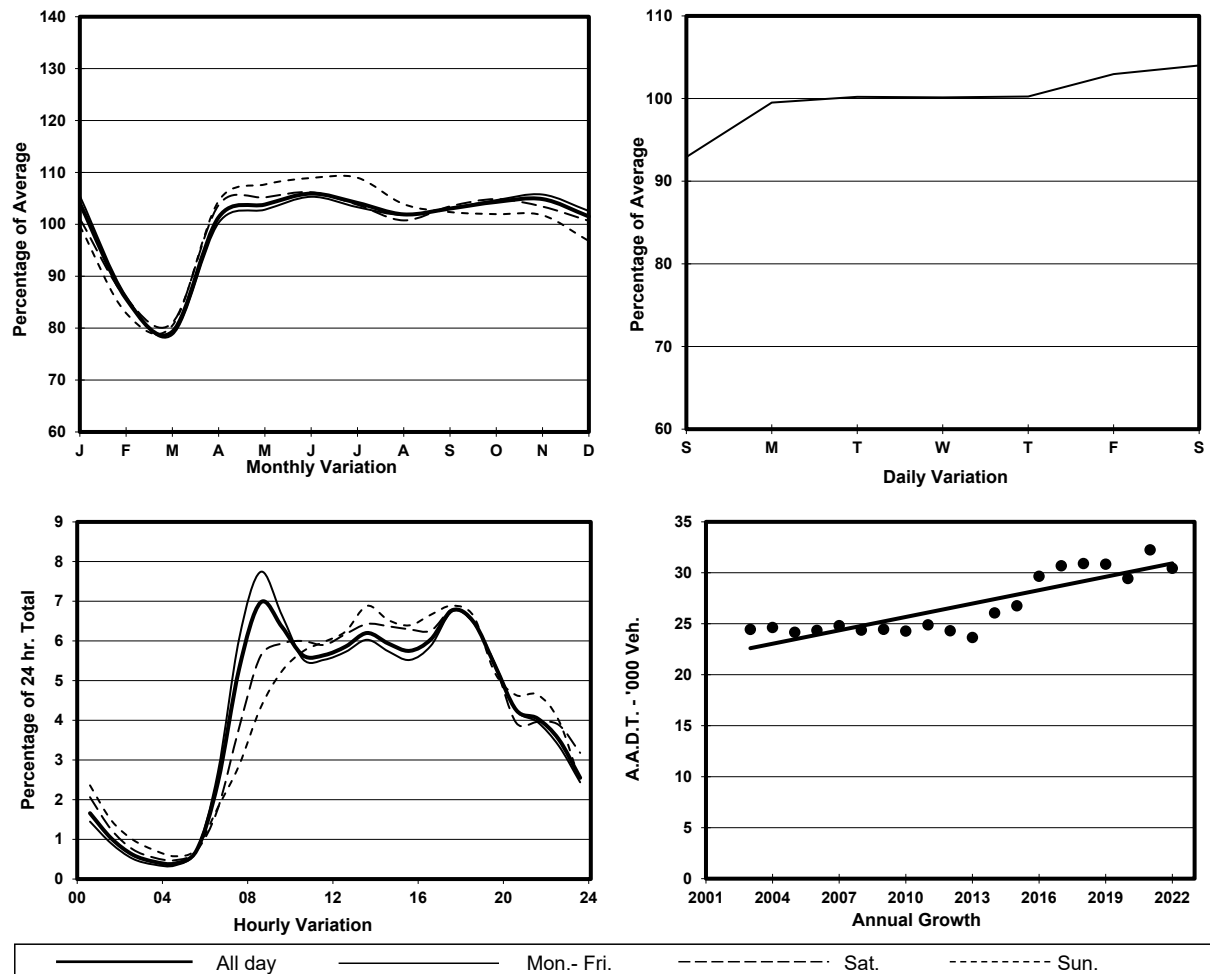
2022

LINK

TING KOK RD (from NAM WAN RD to DAI KWAI ST)

CORE STATION
ROAD NETWORK
ROAD TYPE5006
MAJOR
PRIMARY DISTRIBUTOR

1. TRAFFIC FLOW VARIATION AND GROWTH



2. TRAFFIC CHARACTERISTICS (BY DIRECTION)

Parameter	All - Day	Mon. - Fri.	Sat.	Sun.
EAST BOUND				
A.A.D.T.	15630	15880	16250	14120
R 12 / 24 - %	68.5	68.8	68.7	66.7
R 16 / 24 - %	89.8	90.5	88.3	87.7
AM Peak Hour	0800-0900	0800-0900	0900-1000	0900-1000
One-way flow at AM peak hour	1000	1130	830	600
T - % (AM)	-	-	-	-
PM Peak Hour	1800-1900	1800-1900	1800-1900	1600-1700
One-way flow at PM peak hour	1060	1100	1080	940
T - % (PM)	-	-	-	-
Prop.of commercial vehicles - 16 hr.	-	-	-	-
WEST BOUND				
A.A.D.T.	14810	14840	15530	14320
R 12 / 24 - %	77.6	78.8	75.6	74
R 16 / 24 - %	90.6	90.8	90.2	90
AM Peak Hour	0800-0900	0700-0800	0900-1000	0900-1000
One-way flow at AM peak hour	1120	1260	1060	890
T - % (AM)	-	-	-	-
PM Peak Hour	1700-1800	1700-1800	1700-1800	1700-1800
One-way flow at PM peak hour	1040	1020	1110	1080
T - % (PM)	-	-	-	-
Prop.of commercial vehicles - 16 hr.	-	-	-	-

3. OTHER INFORMATION AND COMMENT